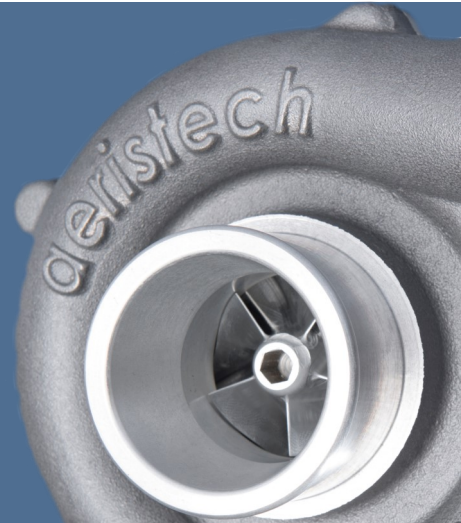


Aeristech

Electric

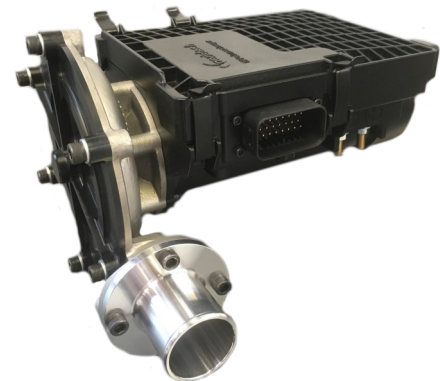
Supercharging

With sufficient power and efficiency, the electric supercharger becomes an alternative to multi-stage turbocharging.

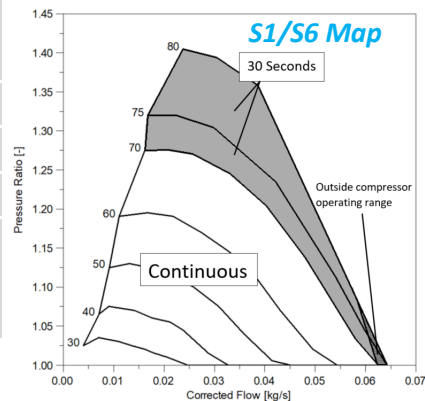
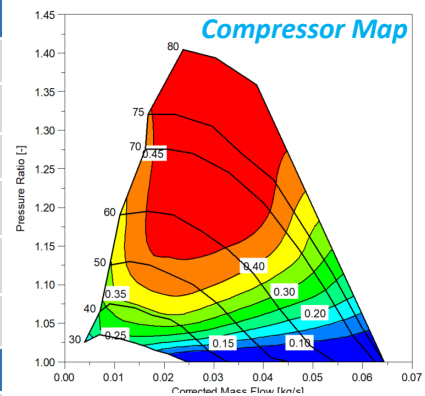


12V eSupercharger Specifications - AeS801A

- Rapid response to speed demand
- High efficiency permanent magnet motor (>90%)
- High efficiency controller (>92%)
- High power density – low cost
- Compact design – integration with air-box possible



General Specification	
Compressor type	Centrifugal
Bearings	Rolling Element - greased (for life)
Cooling	Air (Maximum 50°C)
Ambient air temperature	-40°C to 100°C
Input voltage	9 - 15V (12V nominal)
Mass	<2.6 kg (configuration dependent)
Performance	
Max compressor speed	80,000 rpm
Transient response	< 0.28 seconds
Max pressure ratio	1.4 @ 0.022 kg/s
Max flow	0.06 kg/s
Input power (IEC60034-1) @80,000 RPM	S1: 1.5 kW S6: 2.4 kW (5 min, 10% CDF)



Contact:
T: +44 (0)1926 258422
E: info@aeristech.co.uk

Aeristech Ltd.,
Unit G, Princes Drive Industrial Estate
Coventry Road, Kenilworth, CV8 2FD

www.aeristech.co.uk

V1.0.0